

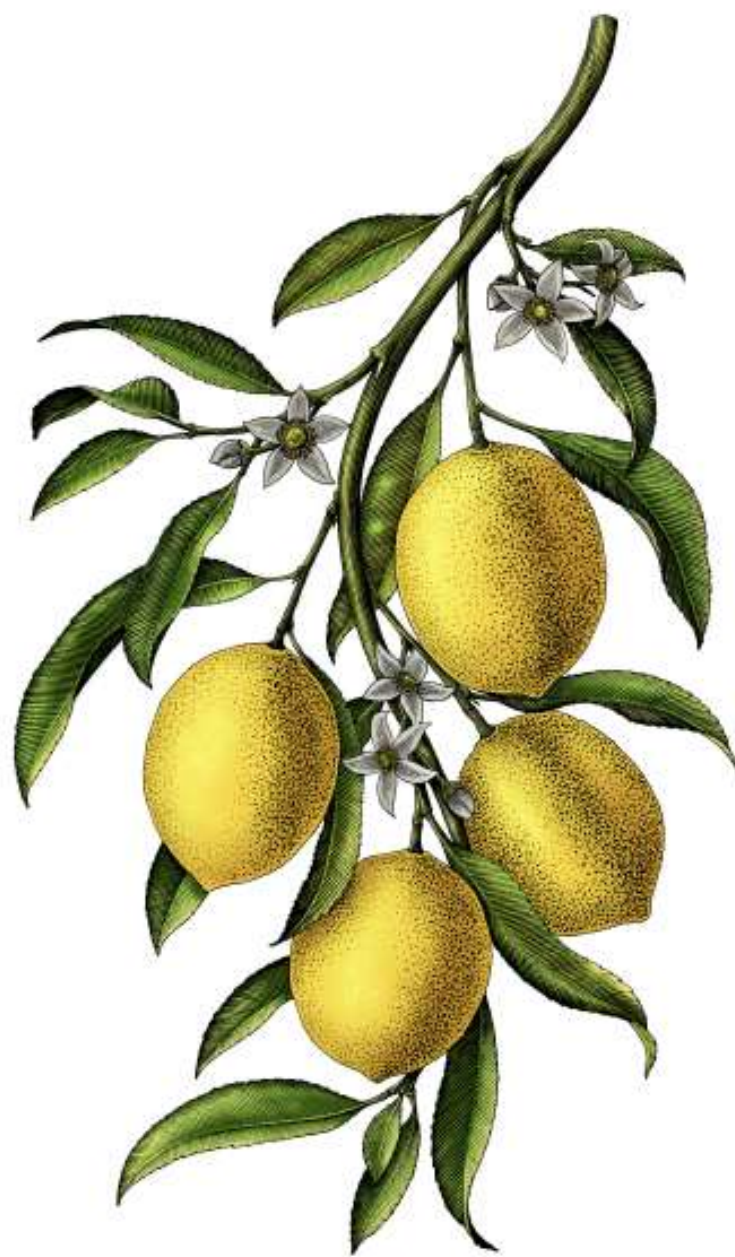
*the*TITLE
vivana
KAMALA



WHERE LIFE TASTES LIKE SUMMER



WHERE LIFE
TASTES LIKE SUMMER



PHUKET MAP



↑ PHANG NGA

Phuket International Airport



NAIYANG BEACH



UWC School

Laguna Golf Phuket

BANG TAO BEACH

Thao Thep Kasattri and Thao Sri Sunthon Monument

SURIN BEACH

KAMALA BEACH

THE TITLE
vivana

British International School

Red Mountain Golf Club



PATONG BEACH



Central Phuket

Phuket Old Town

KARON BEACH

KATA BEACH

PANWA CAPE



YANUI BEACH

NAI HARN BEACH

RAWAI BEACH

PROMTHER CAPE



LOCATION MAP



To Phuket FantaSea	0.75 KM	1 MIN
To Sunwing / Sunprime Kamala Beach	1.3 KM	2 MIN
To Kamala Beach	1.4 KM	2 MIN
To Wattanapat Hospital	1.4 KM	2 MIN
To Cafe' del Mar	1.8 KM	2 MIN
To Big C	2.0 KM	3 MIN
To InterCon Hotel	2.0 KM	3 MIN
To McDonald's	2.1 KM	3 MIN
To Tops	2.2 KM	3 MIN
To Villa Market	2.2 KM	3 MIN
To Hyatt Regency Phuket Resort	3.4 KM	5 MIN

Some places you visit.
This place, you *stay*.

Nestled on Kamala's quietest curve, where the energy of the world meets the stillness of home.



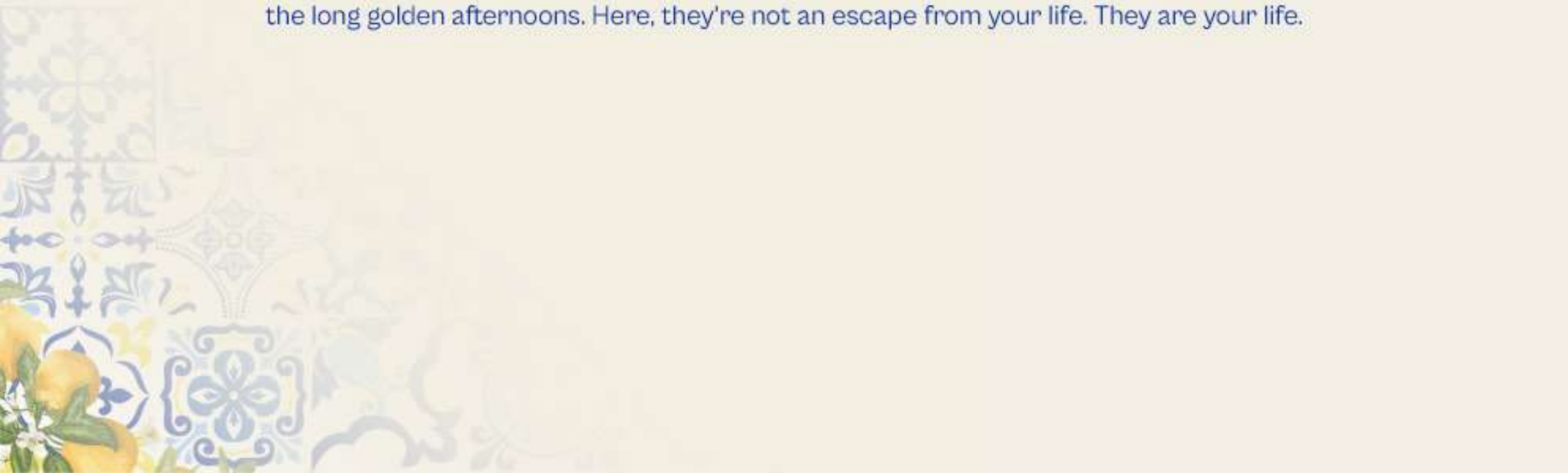
This is La Dolce Vita

La Dolce Vita isn't a destination. It's a way of living – unhurried, golden, and filled with the kind of joy that comes from being exactly where you want to be. The Title Vivana was designed for those who understand that the best moments aren't planned. They simply happen, poolside, glass in hand, with nowhere else to be.



THE LIFE YOU IMAGINED, FINALLY ^{WHERE} YOU LIVE

Inspired by the sun-soaked shores of the Mediterranean, The Title Vivana was born from a simple belief – that beautiful living shouldn't be reserved for holidays. The laughter, the lightness, the long golden afternoons. Here, they're not an escape from your life. They are your life.





VIVANA KAMALA INSPIRE *YOU*

TO FINALLY LIVE IN PHUKET



CONCEPT DESIGN



ARCHITECTURAL DESIGN

Inspired by the sun-warmed streets of the Amalfi Coast and the colourful cliffside of Cinque Terre, The Title Vivana was designed to capture that unmistakable Mediterranean feeling – arched colonnades, curved balconies, and bright facades that make every arrival feel like a welcome. This is architecture built not just to impress, but to belong to.

INTERIOR DESIGN

At The Title Vivana, every space was designed with intention. Communal areas pulse with bold Mediterranean character, while each residence offers its own curated coastal palette – bringing the light of Amalfi and the warmth of Portofino into everyday life. Spaces that feel beautiful the moment you walk in, and even better once you call them home.

LANDSCAPE DESIGN

Envisioned as a Hidden Valley Mediterranean Garden, the grounds of The Title Vivana are where golden light filters through lush surroundings and life flows effortlessly outdoors. Blue for the sea and sky. Yellow for the sun and citrus. Every path, every pool, every shared space designed to make you never want to leave.

4 KEY PILLARS OF SUSTAINABLE DESIGN

4 PILLARS OF SUSTAINABLE LIVING WHERE NATURE, COMFORT
AND WELL-BEING LIVE IN HARMONY



SERVICE

Effortless everyday comfort. Comprehensive services with advanced security, pet-friendly design, and shuttle service. Universal design and seamless indoor-outdoor spaces enhance convenient living for all.



TECHNOLOGY FOR LIVING

Smart living, simplified. Access control systems, USB outlets in every unit, and automated irrigation ensure safety, convenience, and efficient resource use.



ECO-FRIENDLY

In harmony with nature Over 1,800 sq.m. of green space and eco-conscious materials create a healthier environment with reduced environmental impact.



WELLNESS

Designed for well-being. Expansive pool, 25 meter lap pool, family-friendly areas, and pet spaces-enhanced with universal design for a balanced lifestyle.





PROJECT INFORMATION

LAND AREA	APPROX. 6 - 1 - 22 RAI
NO. OF RESIDENTIAL BUILDINGS	8 STOREYS OF 4 RESIDENTIAL BUILDINGS A (PET-FRIENDLY), B, C AND D
FACILITIES	BUILDING A & B
NO. OF RESIDENTIAL UNITS	363 UNITS
SHUTTLE SERVICE	AVAILABLE (FROM MINGLE CRYSTAL LAKE TO KAMALA BEACH)
CAR PARKING	155 LOTS 42% (INC. EV: 8 LOTS, HANDICAPPED: 7 LOTS) 34 LOTS PARALLEL PARKING (52% INC. PARALLEL)
MOTORBIKE PARKING	40 LOTS
BUILDING STYLE	ITALIAN COASTAL STYLE
UNIT TYPE	1 BEDROOM S 30 SQ.M. 1 BEDROOM M 32 - 36 SQ.M. 1 BEDROOM L 40 - 44 SQ.M. 1 BEDROOM PLUS 50 - 56 SQ.M. 2 BEDROOM 60 - 66 SQ.M. 2 BEDROOM PENTHOUSE 89 - 100 SQ.M. 2 BEDROOM PLUS PENTHOUSE 121 - 128 SQ.M.



MASTER PLAN

1ST FLOOR PLAN



- 1 BEDROOM
- 1 BEDROOM PLUS
- 2 BEDROOM
- 2 BEDROOM PENTHOUSE
- 2 BEDROOM PLUS PENTHOUSE



*COMPANY RESERVES THE RIGHT TO AMEND THE TERMS AND CONDITIONS, AT ANY TIME WITHOUT PRIOR NOTICE.
*THE IMAGES SHOWN ARE COMPUTER-GENERATED. CHANGES MAY BE MADE WITHOUT PRIOR NOTICE. ALL RIGHTS RESERVED.

MASTER PLAN

2ND FLOOR PLAN



3RD FLOOR PLAN



- S M L 1 BEDROOM
- 1 BEDROOM PLUS
- 2 BEDROOM
- 2 BEDROOM PENTHOUSE
- 2 BEDROOM PLUS PENTHOUSE

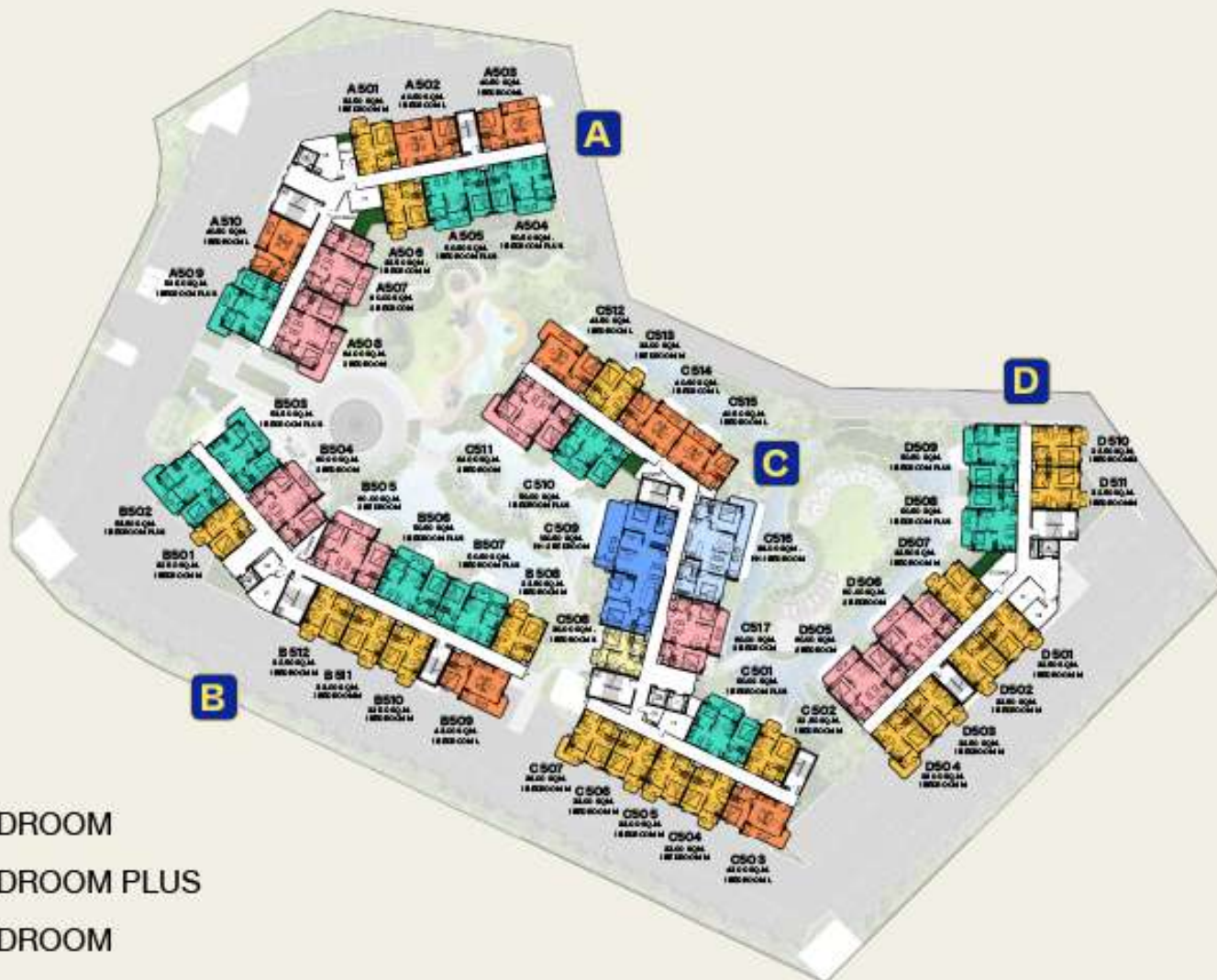


MASTER PLAN

4TH FLOOR PLAN



5TH FLOOR PLAN



- S M L 1 BEDROOM
- 1 BEDROOM PLUS
- 2 BEDROOM
- 2 BEDROOM PENTHOUSE
- 2 BEDROOM PLUS PENTHOUSE

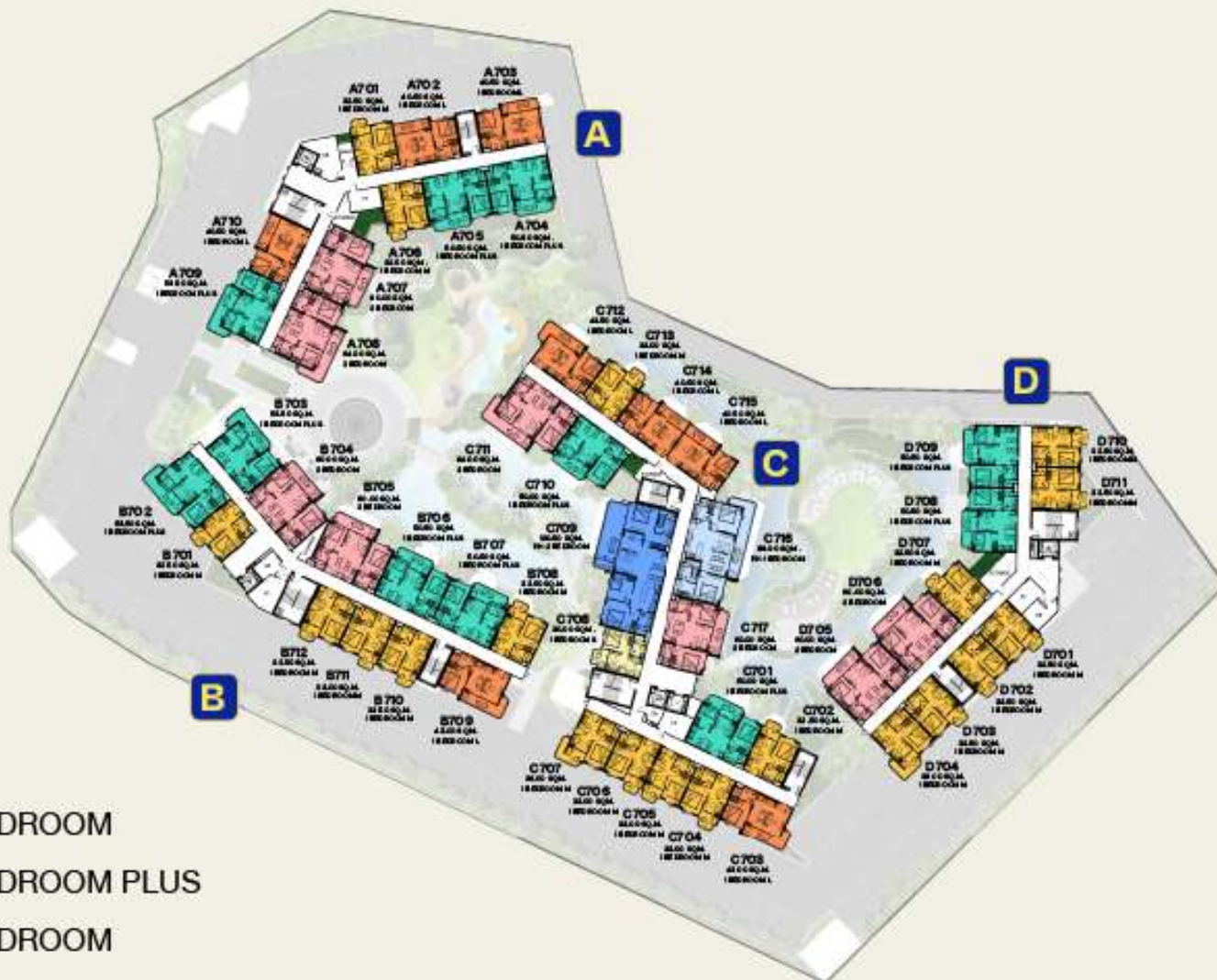


MASTER PLAN

6TH FLOOR PLAN



7TH FLOOR PLAN



- S M L 1 BEDROOM
- 1 BEDROOM PLUS
- 2 BEDROOM
- 2 BEDROOM PENTHOUSE
- 2 BEDROOM PLUS PENTHOUSE



MASTER PLAN

8TH FLOOR PLAN



ROOFTOP FLOOR



- S M L 1 BEDROOM
- 1 BEDROOM PLUS
- 2 BEDROOM
- 2 BEDROOM PENTHOUSE
- 2 BEDROOM PLUS PENTHOUSE



COMMON AREA

TOTAL COMMON AREA APPROX. 5,230 SQ.M.

INCLUDES:

GREEN AREA	APPROX.	1,800	SQ.M.
COMMON GROUND AREA	APPROX.	1,600	SQ.M.
COMMON POOL AREA	APPROX.	770	SQ.M.
COMMON ROOFTOP AREA	APPROX.	380	SQ.M.
COMMON INDOOR AREA	APPROX.	680	SQ.M.





FACILITIES

20 OUTDOOR FACILITIES

1. Banquet Lawn Area
2. Playground Area
3. Entrance Plaza Area
4. Outdoor Lounge
5. Water Feature Area
6. Terrace Area
7. Pet Park Area
8. Trellis with Lawn Area
9. Whirlpool Terrace Area
10. Outdoor Lobby Area
11. Main Swimming Pool Area
12. Main Lap Pool Area
13. Whirlpool Area
14. Kid's Pool with Play Equipment Area
15. Waterfall with Cave
16. Private Pool Area
17. Jacuzzi (Water Hydrotherapy)
18. Hot Tub
19. Outdoor Sky Dining Area
20. Panoramic Deck Sun Lounger Area

8 INDOOR FACILITIES

BUILDING B

1. Co-Working & Co-Kitchen Space
2. Meeting Room
3. Vending Area
4. Laundry Area
5. Fitness Room
6. Yoga Area
7. Lounge & Game
8. Sauna & Steam

EXTERIOR FACILITIES



EXTERIOR FACILITIES



EXTERIOR FACILITIES



EXTERIOR FACILITIES



EXTERIOR FACILITIES



EXTERIOR FACILITIES



INTERIOR FACILITIES



INTERIOR FACILITIES

CO-WORKING SPACE



LAUNDRY



INTERIOR FACILITIES

FITNESS

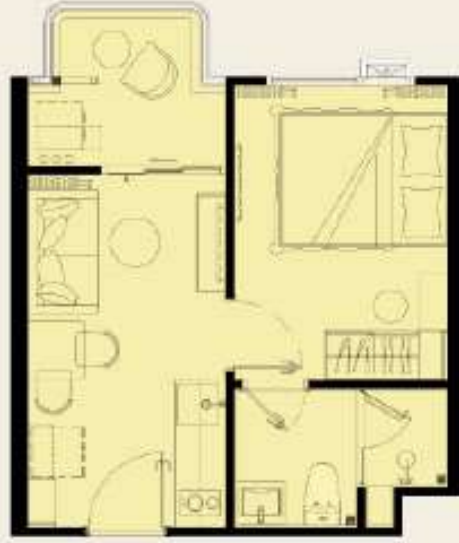


SEMI-OUTDOOR LOBBY

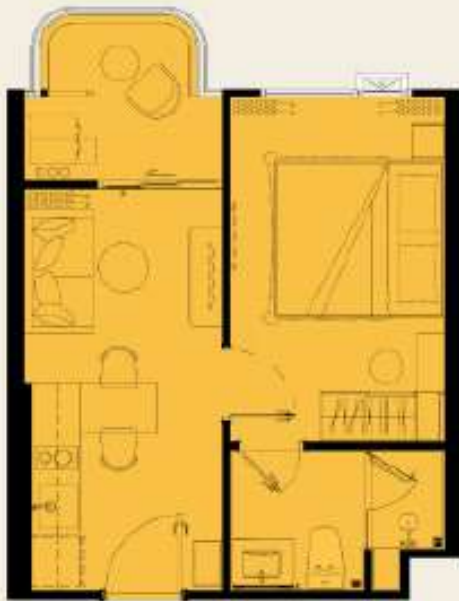


UNIT PLAN

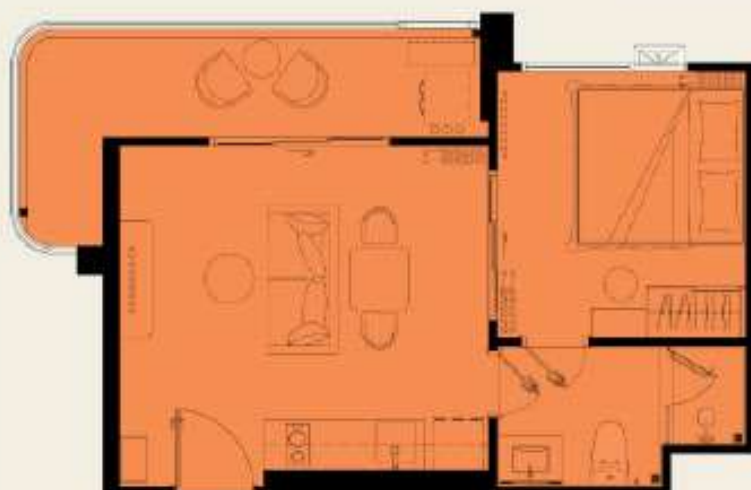
1 BEDROOM S (30 SQ.M.)



1 BEDROOM M (32-36 SQ.M.)

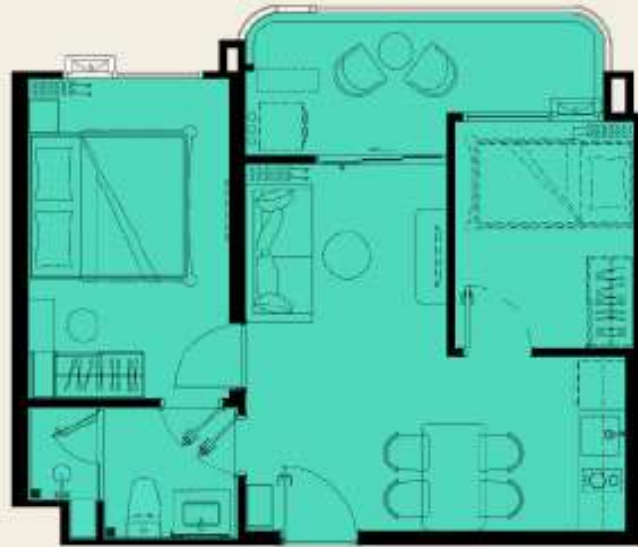


1 BEDROOM L (40-44 SQ.M.)

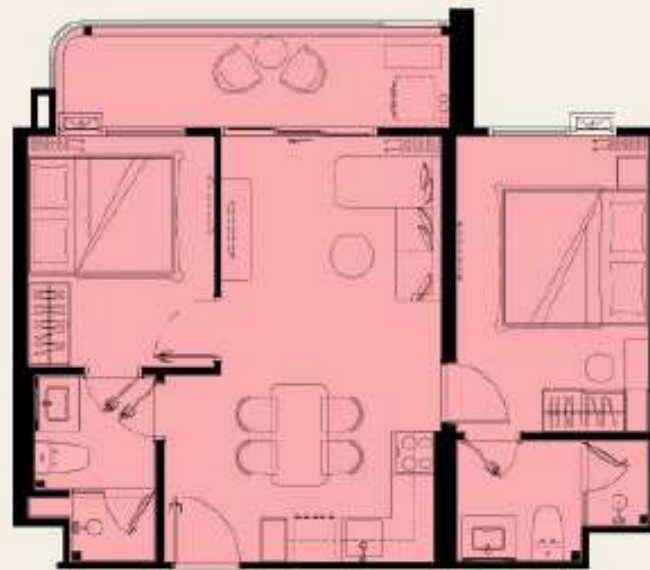


UNIT PLAN

1 BEDROOM P (50-56 SQ.M.)



2 BEDROOM M (60-66 SQ.M.)



UNIT PLAN

PENTHOUSE 01 (89-100 SQ.M.)



PENTHOUSE 02 (121-128 SQ.M.)



INTERIOR DESIGN

1 BEDROOM M
(33 SQ.M.)



INTERIOR DESIGN

1 BEDROOM PLUS
(55 SQ.M.)

